



MANUFACTURING INNOVATIVE  
SOLUTIONS FOR OVER 125 YEARS

*the perfect finish*  
SINCE 1898

# ACM RANGE CLEAR

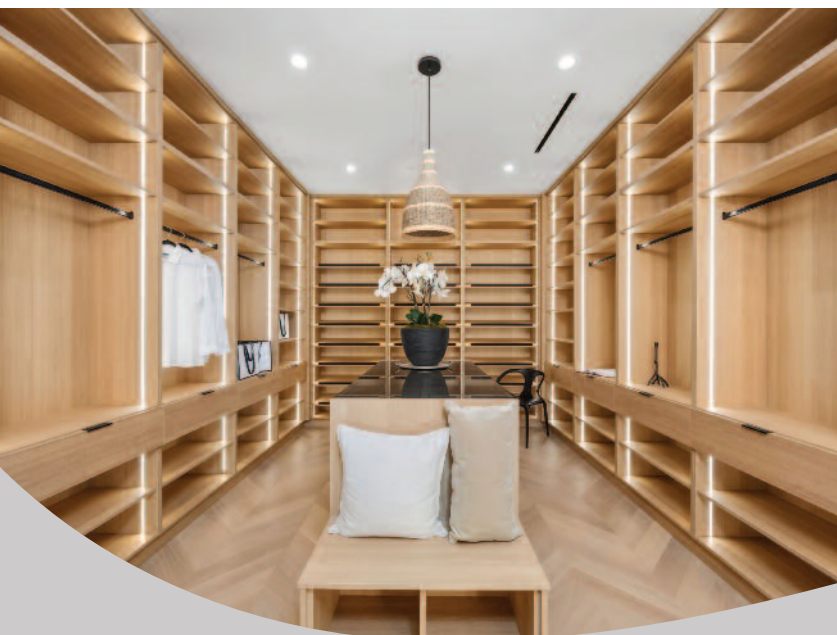


**Acid-Catalyst Modified System:  
High Performance, Fast Drying**



## PRODUCT USE BENEFITS

- Excellent durability for high-traffic and high-wear areas
- Fast drying and curing – ideal for production efficiency
- High resistance to moisture, heat, and chemical exposure
- Excellent adhesion, clarity, and colour retention (natural tanning over time)
- Suitable for coat-on-coat application, great sanding properties



CONTACT ONE OF OUR SALES TEAM TODAY ON  
**0116 274 2222 (UK) 028 9046 9046 (IRELAND)**



MANUFACTURING INNOVATIVE  
SOLUTIONS FOR OVER 125 YEARS

*the perfect finish*  
SINCE 1898



**ACM** RANGE  
*CLEAR*



## TECHNICAL INFORMATION

- Two-component AC-modified system (9:1 mix ratio)
- Available in all sheen levels – dead matt to full gloss
- Wide substrate compatibility – wood, MDF, some metals/plastics (pre-test advised)
- Low odour, so less residual smell to end users
- Available as NON-TOXIC (EN71)
- Supports Health, Safety & Environmental compliance
- Suitable for hand spray, air-assisted or conventional pumps, robotic application and brush
- Manufactured in the UK



FOR FURTHER INFORMATION PLEASE  
CALL OUR SALES TEAM TODAY ON

**0116 274 2222 (UK)**  
**028 9046 9046 (IRELAND)**

### ISF GROUP HQ

Thurmaston Boulevard • Leicester • LE4 9HS • UK  
Telephone: 0116 274 2222

**email: [sales@isf.co.uk](mailto:sales@isf.co.uk)**

### ISF GROUP IRELAND

Unit 5 • Moyle Business Park  
49A Rankinstown Road • Ballymena  
BT42 3HR • Ireland  
Telephone: 028 9046 9046

**online: [www.isf.co.uk](http://www.isf.co.uk)**